

**HONDA**  
The Power of Dreams



# STREET & TOURING

2020



# RIDE FREE

Take to the streets with attitude, presence and all-round versatility, free to explore the city and everything it has to offer. Or, if the open road is your thing, embark on a long, unforgettable journey across towns, countries and continents. The only limit is your imagination.

## CONTENTS

---

CB1100RS	04
CB1100EX	06
NC750S	08
CB500F	10
CB125F	12
REBEL (NEW)	14
MSX125	16
SUPER CUB	18
MONKEY	20
CB1000R (UPDATED)	22
CB650R	24
CB300R	26
CB125R	28
GL1800 GOLD WING (UPDATED)	30
GL1800 GOLD WING TOUR (UPDATED)	32
VFR800F	34
SPECIFICATIONS	36
HONDA TECHNOLOGY	44
HONDA EXPERIENCES	46
THE POWER OF DREAMS	47

---

# CB1100RS

## ALWAYS THE ONE

Stripped back and lean, the CB1100RS has the look of a 1970's race bike, with more than a hint of café racer. The curvaceous fuel tank – made without seam-welded lips – evokes hand-made craftsmanship, while the single round headlight and twin instrument dials outline a timeless silhouette. Adding crisp-edged modernity, all lighting is LED.

At the heart of the CB1100RS is its muscular 1,140cc DOHC four-cylinder engine. Linear, instantly accessible drive is what this bike is all about, and there is plenty of it, anywhere in the rev range. The CB1100RS features tighter steering geometry than the CB1100EX, with rake and trail of 26°/99mm and wheelbase of 1,485mm to give faster steering and more responsive handling. A lower, more compact riding position moves the rider's weight forward, complementing the chassis changes.

The CB1100RS is also equipped with 43mm Showa Dual Bending Valve (SDBV) two-piece front forks, remote reservoir rear shocks, plus 17-inch cast aluminium wheels and dual radial-mount four-piston brake calipers, all helping to provide excellent ride quality and precise road holding.



MAX POWER OUTPUT  
**88.5** bhp  
@ 7,500 rpm

MAX TORQUE  
**91** Nm  
@ 5,500 rpm

WHEELS  
**17"**

### KEY FEATURES



PGM-FI



HECS3



LED



ABS



HISS



4  
EURO 4



SDBV



Discover more at [honda.co.uk](https://www.honda.co.uk)

# CB1100EX

## SPIRIT, SOUL AND INNOVATION

With its exquisitely detailed lines the Honda CB1100EX exudes classic style, looking like a true 1970's superbike. A silky-smooth 1,140cc DOHC engine provides instantly accessible power and torque, anywhere in the rev range. Air and oil-cooled, the engine revs to 8,500rpm and its four-cylinders breathe freely through the evocative 4-2 exhaust. An assist/slipper clutch makes for easier lever engagement and rear wheel stability on downshifts.

The CB1100EX features relaxed steering geometry, with rake and trail of 27°/114mm and wheelbase of 1,490mm, delivering sure-footed stability with neutral handling characteristics. The 'rider triangle' is also relaxed and upright; seat height is 790mm and the handlebar shape has been revised to maintain a neutral position. To give excellent control the CB1100EX is equipped with 41mm Showa Dual Bending Valve (SDBV) front forks, which uses two valves to generate both compression and rebound damping force for a linear suspension feel. Adding modernity, the front and rear lights are LED and 18-inch wheels run stainless steel spokes.



**MAX POWER OUTPUT**  
**88.5** bhp  
@ 7,500 rpm

**MAX TORQUE**  
**91** Nm  
@ 5,500 rpm

**WHEELS**  
**18"**

### KEY FEATURES



PGM-FI



HECS3



LED



ABS



HISS



EURO 4



SDBV



Discover more at [honda.co.uk](https://www.honda.co.uk)

**NC750S**

# REDISCOVER YOUR FREEDOM

The NC750S is one of a kind. Part of the NC750 series, it's a motorcycle that suits every day riding – with a low seat height, comfortable riding position and low centre of gravity. The NC750S's liquid-cooled 745cc twin-cylinder engine provides responsive power, improved acceleration and plenty of torque from low down through the mid range – as well as an unmistakable big-twin sound. Its performance is matched by impressive fuel efficiency and Euro 4 compliance (CO<sub>2</sub> emissions of 81g/km). All in all, it has lean exhilarating performance that goes easy on the petrol pump.



## KEY FEATURES



PGM-FI



HECS3



LED



HMAS



HISS



EURO 4

MAX POWER OUTPUT

**54.0** bhp  
@ 6,250 rpm

FUEL TANK

**14.1** Litres

FUEL CONSUMPTION

**17.8** miles per litre

Discover more at [honda.co.uk](https://www.honda.co.uk)



**CB500F**

# THE STREET FIGHTER

The CB500F is motorcycling pleasure in its purest form. Tightly-wrapped, aggressive new street fighter style shows off the easy-to-ride machine's engineering and wide, tapered handlebars add a streetfighter's signature. Full LED lighting is matched by a new LCD dash that includes a Gear Position and Shift Up indicator.

Its 8-valve, liquid-cooled parallel twin-cylinder engine produces 46.9 bhp @ 8,500rpm – so is A2 licence compliant – with peak torque of 43Nm @ 7,000rpm. The redesigned intake and exhaust, plus revised camshafts and valve lift equal increased low and mid-range torque for stronger acceleration. An assist/slipper clutch eases upshifts of the six-speed gearbox and manages rear wheel lock-up on hard down changes.

41mm telescopic forks deliver a smooth ride; spring preload is adjustable. A high-quality single-tube rear monoshock features 5-stage spring preload adjustment and works through a rigid box-section swingarm. The front tyre is a 120/70-ZR17 and the rear a 160/60-ZR17; a single front 320mm wavy disc and powerful two-piston brake caliper is matched to a 240mm rear disc and single-piston caliper; 2-channel ABS is standard. Maximum style, performance and riding enjoyment, minimal fuss and expense. How much more do you need?



## KEY FEATURES



PGM-FI



HECS3



LED



ABS



HISS



EURO 4



SDBV

MAX POWER OUTPUT

**46.9** bhp @ 8,500 rpm

MAX TORQUE

**43** Nm @ 7,000 rpm

SEAT HEIGHT

**785** mm

Discover more at [honda.co.uk](https://www.honda.co.uk)

**CB125F**

# INSTANT FUN

The Honda CB125F sets you free, putting the power of independence in your hands. As a member of the legendary Honda CB family it features razor-cut lines that are styled to take on the street, with side shrouds that extend sharply to inject attitude to the broad-shouldered fuel tank. Up front is the aggressive nose cowl surrounding the multi-reflector headlight and compact dash display – which includes rev counter and gearshift indicator.

Its tough OHC 2-valve, PGM-FI fuel-injected, single-cylinder engine is super-efficient, delivering 33 miles/litre (WMTC mode) and crisp acceleration from a standing start. All of this comes together to deliver an impressive range from the 13L tank, keeping you out of the filling stations and ahead of the traffic.

The integrated steel frame, 18-inch six-spoke aluminium wheels, telescopic front forks and twin rear shocks provide a perfect balance between straight stability and cornering feedback. When things get really tight, the slim body, feather light 128kg kerb weight and wide handlebars – with 45° lock left and right – allow swift manoeuvring in and out of tight spaces.



## KEY FEATURES



PGM-FI



HECS3



CBS



EURO 4

MAX POWER OUTPUT

**10.5** bhp  
@ 7,750 rpm

MAX TORQUE

**10.2** Nm  
@ 6,250 rpm

KERB WEIGHT

**128** kg

Discover more at [honda.co.uk](http://honda.co.uk)

# REBEL

## EXPRESS YOURSELF

The Rebel is a custom motorcycle that showcases a timeless 'bobber' look but one imbued with a forward looking, contemporary style all of its own. Powered by a 471cc parallel twin-cylinder engine, with strong bottom-end torque and a smooth, linear power delivery, the Rebel is also A2 Licence friendly. For 2020 a redesigned 2-1 shotgun-style muffler helps the engine gain EURO5 compliance while an assist-and-slipper clutch makes gearchanges easier, with lighter lever action.

Accessible and easy to manage, the Rebel has a low seat height and relaxed riding position, with gently outstretched arms matched to mid-mounted foot pegs and a comfortable new seat design. New suspension settings front and rear firm up the ride and the shock absorber is nitrogen-charged, for extra control. Also, now all lighting is LED, there's a digital gear position indicator plus the option of the Rebel-S – finished in Matt Axis Grey Metallic and loaded with factory-fitted headlight cowl and smoked screen, retro fork gaiters and a special diamond-stitch seat.



Rebel-S



Rebel



### ENGINE

**471** cc

### MAX TORQUE

**43.3** Nm @ 6,000 rpm

### SEAT HEIGHT

**690** mm

Available with black seat, passenger seat as standard and without licence plate reflectors. All legally required safety features included.

### KEY FEATURES



LED



HECS3



ABS



EURO 5



PGM-FI

Rebel-S



Discover more at [honda.co.uk](https://www.honda.co.uk)





# POCKET PERFORMER

Unique, unconventional, with an attitude all of its own, the MSX125 may be compact and incredibly nimble, but it rides and feels like a much bigger machine. Clutch, gear change and throttle control are all operated in the same way you would on a full-sized bike, while underneath its bold muscular body are a whole host of features that create a balanced, agile and comfortable ride. These include a mono-backbone steel frame, 31mm inverted front forks and 120 front/130 rear tyres on 12-inch wheels with 'Y' shaped spokes.

The MSX125's PGM-FI engine ensures a responsive, economic and efficient ride. The MSX125 punches above its weight with ABS-controlled hydraulic single disc brakes providing assured stopping in all conditions. A powerful projector headlight and LED taillight gives you added road presence. If you're looking for serious fun, look no further than the MSX125.



## KEY FEATURES



PGM-FI



HECS3



LED



ABS

4

EURO

EURO 4

MAX POWER OUTPUT

**9.7** bhp @ 7,000 rpm

SEAT HEIGHT

**765** mm

KERB WEIGHT

**101.7** kg

Discover more at [honda.co.uk](http://honda.co.uk)

# Super Cub

## EASY. SIMPLE. STYLE.

The Super Cub's simple appeals – ease of use, reliability and frugality – have never gone out of fashion. It's why over 100 million have been made over the last 60 years. And also why it's been reborn; the Super Cub C125 is a stylish evolution of a revolutionary machine that's worked so hard for so many over the last six decades, and ready for life in a busy European city.

The riding position is straight-backed and gives excellent visibility, the seat uses high-density urethane foam for comfort and the handlebars are rubber-mounted. Full LED lighting is a premium addition, as is the Honda Smart Key which controls the ignition and immobiliser from the rider's pocket. The tubular steel frame, telescopic forks, twin rear shocks and cast aluminium 17-inch wheels rolling tubeless tyres ensure confident handling while its robust 125cc air-cooled, fuel-injected engine generates a smooth and linear power delivery. It's also fuel efficient, returning 41.4 miles/litre (WMTC mode). And just like the original, an automatic centrifugal clutch makes operating the four-speed gearbox twist-and-go simple.



### KEY FEATURES

- PGM-FI
- SMK
- LED
- ABS
- WHD
- 4 EURO 4

**ENGINE**  
**125** cc

**MAX TORQUE**  
**10.4** Nm @ 5,000 rpm

**KERB WEIGHT**  
**109** kg

Discover more at [honda.co.uk](https://www.honda.co.uk)



# Monkey

## THE SMILE MACHINE

The Monkey has a style all of its own. And character like nothing else. An icon of the '70s re-imagined for now, complete with funky high-rise handlebars. But, really, really what the Monkey's about is the sheer, basic fun of riding. It's built to make you smile. And we think there's nothing wrong with that. Its air-cooled, fuel-injected horizontal 125cc SOHC power unit is tuned to deliver enjoyable around-town performance and makes 9.3 bhp @ 7,000rpm and 11Nm @ 5,250rpm. The four-speed gearbox is managed by a clutch, just like a big bike. The plush, high-density urethane seat is set just 775mm from the ground and the 107kg kerb weight is easy to manage. Up Side Down (USD) front forks are matched by dual rear shocks and fat, 12-inch block pattern tyres. And the single-channel ABS is controlled by an Inertial Measurement Unit (IMU) so the rear of the bike won't lift under heavy braking; a single 220mm front disc and 190mm rear provide the stopping power. So much more than a toy. No less of a motorcycle. It's a Monkey.



### KEY FEATURES



PGM-FI



SUSDF



LED



ABS

4  
EURO  
EURO 4

ENGINE  
**125** cc

MAX TORQUE  
**11** Nm  
@ 5,250 rpm

KERB WEIGHT  
**107** kg

Discover more at [honda.co.uk](https://www.honda.co.uk)



**NEO  
SPORTS  
CAFÉ**

**CB  
1000R**

## A DIFFERENT BEAST

The Honda CB1000R is head of the Neo Sports Café pack. Inspired by a fusion of Sport Naked streetfighters and retro café racers, it's a Honda legend reimagined for the modern age, powered by a 998cc DOHC four-cylinder engine, tuned to deliver an extra rush of peak power with a torque boost right through the mid-range. The Throttle By Wire (TBW) system firmly puts control in the rider's hands with three pre-set riding modes – RAIN, STANDARD and SPORT – plus a USER mode allowing customisation of the engine's output and character.

In true Sport Naked style, the CB1000R wears its heart on its sleeve, revealing retro-industrial minimalism and aluminium details for all to see. There are Showa SFF-BP USD forks and radial brakes up front, with a signature single-sided swingarm matched to Showa monoshock rear suspension. And the CB1000R's uncompromising looks are rounded off by a full set of premium LED lighting.

And the CB1000R+ model has even greater aspirational appeal with a quickshifter, heated grips and a host of additional contrasting accessories fitted as standard



### KEY FEATURES



PGM-FI



HSTC



LED



ABS



TWS  
RM<sup>55</sup>



4  
EURO 4



RMC



MAX POWER OUTPUT

**143.5** bhp  
@ 10,500 rpm

MAX TORQUE

**104** Nm  
@ 8,250 rpm

KERB WEIGHT

**212** kg

Discover more at [honda.co.uk](https://www.honda.co.uk)



# PURE MACHINE

Ultra-compact, the CB650R's powerful stance channels CB1000R Neo Sports Café retro-minimalism; the motorcycle as pure machine. Its inline four-cylinder DOHC 16-valve engine is built to be used, hard and features peak power boosted to 93.4 bhp (plus an easy 35kW conversion for A2 licence holders) with torque of 64Nm and a 12,000rpm redline.

Close, short gearing and a smooth rush of mid-range delivers smart acceleration away from the lights and through the gears – and then there's the evocative howl from the exhaust as revs climb high. An assist/slipper clutch eases upshifts and manages hard down changes, while Honda Selectable Torque Control (HSTC) maintains rear wheel traction.

Adjustable 41mm Showa Separate Fork Function (SFF) USD forks offer supple response and feel for front tyre grip. 120/70-17 and 180/55-17 front and rear tyres deliver superbike-sized grip levels, dual radial-mount four-piston calipers work 310mm floating discs and 2-channel ABS maintains smooth control, wet or dry. Tapered handlebars offer feel and leverage. Full LED lighting adds a crisp, contemporary edge and the distinctive circular headlight throws out a penetrating blue-tinted beam. The digital TFT dash includes a Gear Position and Shift Up indicator.



**MAX POWER OUTPUT**  
**93.4** bhp @ 12,000 rpm

**MAX TORQUE**  
**64** Nm @ 8,500 rpm

**SIDE SWEEP**  
**4-1 Exhaust**

## KEY FEATURES



PGM-FI



HECS3



LED



ABS



HSS



EURO 4



HSTC



RMC



Discover more at [honda.co.uk](https://www.honda.co.uk)

NEO  
SPORTS  
CAFÉ

CB  
300R

## BARE-BONED ATTITUDE

They say less is more. Nowhere is this truer than with the Honda CB300R – part of the Neo Sports Café range. Tipping the scales at just 143kg wet, its free-revving 286cc liquid-cooled single-cylinder engine punches well above its weight on the city streets. The 41mm upside-down forks and radial front brakes and tyres exude Sport Naked style, whilst the LCD instrument panel and full LED lighting ensure full visibility on the go. It's light on the wallet, too; with a 10L fuel cell hidden underneath its angular cover, the CB300R can cover over 186 miles between fill-ups.



### KEY FEATURES



PGM-FI



FULL LED



ABS



EURO 4



RMC



MAX POWER OUTPUT

**31.0** bhp  
@ 8,500 rpm

MAX TORQUE

**27.5** Nm  
@ 7,500 rpm

SEAT HEIGHT

**799** mm

Discover more at [honda.co.uk](https://www.honda.co.uk)

NEO  
SPORTS  
CAFÉ

CB  
125R

# FREEDOM AWAITS

Lightweight. Compact. Agile. The Honda CB125R is the perfect bike for first-timers with an urge to let loose in the city. Sharing its design ethos with the Neo Sports Café range, it's packed with hard-edged Sport Naked style. And weighing in at just 126kg wet, the CB125R is an extremely easy machine to handle. It features 41mm upside-down forks, an underbelly muffler and a radial-mount front brake. There's also a modern LCD display to keep you informed on the move and full LED lighting. And when you want to hit the open road, the 10.1L fuel tank can cover 300 miles between fuel stops.



## KEY FEATURES



PGM-FI



FULL LED



ABS



EURO 4



RMC

MAX POWER OUTPUT

**13.1** bhp  
@ 10,000 rpm

SEAT HEIGHT

**816** mm

KERB WEIGHT

**126** kg

Discover more at [honda.co.uk](https://www.honda.co.uk)










# THE GOLD STANDARD

Lighter and more compact, the Honda GL1800 Gold Wing makes touring easier than ever. The 1,833cc six-cylinder engine is equipped with six-speed manual transmission and Throttle By Wire (TBW) system with four rider modes to choose from – TOUR, SPORT, ECON and RAIN – and FI settings optimised for low-speed control.

When it comes to touring, convenience and comfort are vital. So the Gold Wing features double wishbone front suspension and single-sided rear Pro-Arm, as well as Apple CarPlay® with iPhone\* connectivity. Add in Honda Selectable Torque Control Hill (HSTC) and Hill Start Assist, plus the option of DCT, and you have a ride that offers more comfort and control on the open road.



## KEY FEATURES

-  PGM-FI
-  AIRBAG
-  FULL LED
-  ABS
-  SMK
-  HSTC
-  HSA
-  RGR

MAX TORQUE

**170** Nm @ 4,500 rpm

TRANSMISSION

**DCT** Dual Clutch Transmission Available

SEAT HEIGHT

**745** mm

19YM action photos.

Discover more at [honda.co.uk](http://honda.co.uk)



\*Apple and iPhone are trademarks of Apple Inc., registered in the U.S. and other countries. CarPlay is a trademark of Apple Inc.





# THE ART OF LUXURY TOURING

The Gold Wing Tour is the ultimate two wheeled touring motorcycle. It shares the Gold Wing's 1,833cc six-cylinder engine and has the same double wishbone front suspension, single-sided Pro-Arm and Apple CarPlay® connectivity. But that's where the similarities end. For long-distance two-up travel the Gold Wing Tour now has new, comfortable suspension settings as well as larger grab handles for the passenger.

Of course, there's full luggage – the top box will take two full-face helmets – for those weekends away as well as rear audio speakers, heated grips and centre stand. Twin USB charging ports are an addition, as are standard-fit LED fog lights. There's also the option of the Gold Wing Tour with Dual Clutch Transmission (DCT) and Airbag; the third-generation seven-speed DCT offers even more low-speed control for enhanced luxury on those long journeys across country – or countries.



MAX TORQUE

**170** Nm @ 4,500 rpm

SEAT HEIGHT

**745** mm

TOTAL STORAGE CAPACITY

**110L**

19YM action photos.

## KEY FEATURES



PGM-FI



HSTC



FULL LED



USB



SMK



AIRBAG



HSA



RGR



\*Apple and iPhone are trademarks of Apple Inc., registered in the U.S. and other countries. CarPlay is a trademark of Apple Inc.

Discover more at [honda.co.uk](http://honda.co.uk)

VFR

# CHASE YOUR DREAM

With the VFR800F, the moments you live for become even easier to reach, thanks to a range of innovative features and a 10kg weight reduction over the previous model. To begin with, its legendary 782cc, liquid-cooled V4-VTEC engine has plenty of low-down torque, with a pumped up mid-range and smooth, seamless transition towards peak power.

The aluminium twin-spar frame is the perfect match for the Pro-arm swingarm and Pro-Link® rear suspension, balanced at the front with 43mm telescopic forks, powerful radial-mount four-piston front brake calipers and twin 310mm floating discs, plus 256mm rear disc.

The VFR800F is also loaded with hard working technology that makes riding easy. Honda Selectable Torque Control (HSTC) ensures consistent rear wheel drive while ABS ensures safe and secure stopping no matter the weather. 5-stage heated grips (with dash indicator) are fitted as standard and the indicators self-cancel when they should – thanks to lean and wheel speed sensors – plus computer control. Finally, its sleek, sporty styling is matched by effortless comfort thanks to a seat height that can be adjusted from 789mm up to 809mm, and fairing that provides ample protection from the elements.



## KEY FEATURES



PGM-FI



HECS3



FULL LED



ABS



HISS



EURO 4



SDBV

MAX POWER OUTPUT

**104.5** bhp @ 10,250 rpm

ENGINE

**V4**

KERB WEIGHT

**242** kg

Discover more at [honda.co.uk](http://honda.co.uk)

## SPECIFICATIONS

# CB1100RS

### ENGINE

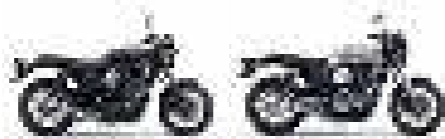
Engine Type	Inline four-cylinder, air and oil-cooled, DOHC
Engine Displacement	1,140 cc
Max. Power Output	88.5 bhp @ 7,500 rpm
Max. Torque	91 Nm @ 5,500 rpm
Fuel Consumption/Emissions	11.7 miles/litre / 123 g/km

### CHASSIS, DIMENSIONS AND WEIGHT

Length x Width x Height (mm)	2,180 x 800 x 1,100
Seat Height (mm)	795
Wheelbase (mm)	1,485
Kerb Weight (kg)	252

### WHEELS, SUSPENSION AND BRAKES

Brakes (Front/Rear)	Hydraulic dual floating 310 mm discs / Hydraulic disc
Tyres (Front/Rear)	120/70 R17 / 180/55 R17
Suspension Front	43 mm conventional fork (SDBV) with adjustable spring preload
Suspension Rear	Twin shocks with adjustable spring preload



Darkness Black Metallic    Matt Beta Silver Metallic

# CB1100EX

Engine Type	Inline four-cylinder, air and oil-cooled, DOHC
Engine Displacement	1,140 cc
Max. Power Output	88.5 bhp @ 7,500 rpm
Max. Torque	91 Nm @ 5,500 rpm
Fuel Consumption/Emissions	11.7 miles/litre / 123 g/km

Length x Width x Height (mm)	2,200 x 830 x 1,130
Seat Height (mm)	790
Wheelbase (mm)	1,490
Kerb Weight (kg)	255

Brakes (Front/Rear)	Hydraulic dual floating 296 mm discs / Hydraulic disc
Tyres (Front/Rear)	110/80 R18 / 140/70 R18
Suspension Front	41 mm conventional fork (SDBV) with adjustable spring preload
Suspension Rear	Twin shocks with adjustable spring preload



Candy Chromosphere Red

# NC750S

Engine Type	Liquid-cooled 4-stroke 8-valve, SOHC parallel 2-cylinder
Engine Displacement	745 cc
Max. Power Output	54 bhp @ 6,250 rpm (35 kW @ 5,750 rpm)
Max. Torque	68 Nm @ 4,750 rpm (65 Nm @ 3,750 rpm)
Fuel Consumption/Emissions	17.6 miles/litre / 81 g/km

Length x Width x Height (mm)	2,215 x 775 x 1,130
Seat Height (mm)	790
Wheelbase (mm)	1,520
Kerb Weight (kg)	217

Brakes (Front/Rear)	320 mm single wavy hydraulic disc / 240 mm single wavy hydraulic disc
Tyres (Front/Rear)	120/70 ZR17M/C (58W) / 160/60 ZR17M/C 969W
Suspension Front	41 mm Telescopic, 120 mm stroke
Suspension Rear	Monoshock damper, Pro-Link® swingarm, 120 mm travel



Graphite Black / Atmosphere Blue Metallic    Candy Chromosphere Red



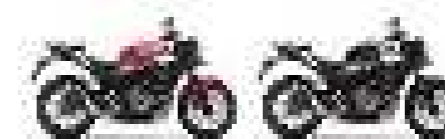
Graphite Black Pearl Brown

# CB500F

Engine Type	Liquid-cooled 4-stroke DOHC parallel twin
Engine Displacement	471 cc
Max. Power Output	46.9 bhp @ 8,600 rpm
Max. Torque	43 Nm @ 6,500 rpm
Fuel Consumption/Emissions	17.7 miles/litre / 80 g/km

Length x Width x Height (mm)	2,080 x 790 x 1,060
Seat Height (mm)	789
Wheelbase (mm)	1,410
Kerb Weight (kg)	189

Brakes (Front/Rear)	2 Channel ABS, 320 mm disc with two piston caliper / 240 disc with single piston caliper
Tyres (Front/Rear)	120/70 ZR17M/C / 160/60 ZR17M/C
Suspension Front	Conventional Telescopic, 41 mm, pre-load adjustable
Suspension Rear	Pro-Link® mono with 5 stage Preload adjuster, steel square pipe swingarm



Grand Prix Red    Matt Gunpowder Black Metallic



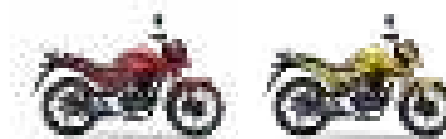
Pearl Metalloid White / Matt Pearl Agile Blue    Candy Energy Orange

# CB125F

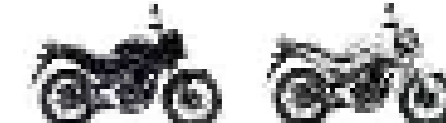
Engine Type	Air-cooled 4-stroke 2-valve OHC single with balancer shaft
Engine Displacement	124.7 cc
Max. Power Output	10.5 bhp @ 8,000 rpm
Max. Torque	10.2 Nm @ 6,000 rpm
Fuel Consumption/Emissions	31 miles/litre / 45 g/km

Length x Width x Height (mm)	2,035 x 765 x 1,080
Seat Height (mm)	775
Wheelbase (mm)	1,295
Kerb Weight (kg)	128

Brakes (Front/Rear)	240 mm disc with double piston caliper / 130 mm drum
Tyres (Front/Rear)	80/100 R18M/C 47P / 90/90 R18M/C 51P
Suspension Front	120 mm Telescopic (31 mm diameter)
Suspension Rear	Dual rear shocks with 5-step spring preload adjustment



Candy Blazing Red    Pearl Twinkle Yellow



Onyx Blue Metallic    Pearl Sunbeam White

## SPECIFICATIONS

# REBEL

### ENGINE

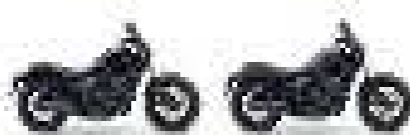
Engine Type	Liquid-cooled DOHC 4-stroke 4-valve two-cylinder
Engine Displacement	471 cc
Max. Power Output	45.6 bhp @ 8,500 rpm
Max. Torque	43.3Nm @ 6,000 rpm
Fuel Consumption/Emissions	16.8 miles/litre / 85 g/km

### CHASSIS, DIMENSIONS AND WEIGHT

Length × Width × Height (mm)	2,205 × 820 × 1,090
Seat Height (mm)	690
Wheelbase (mm)	1,490
Kerb Weight (kg)	191

### WHEELS, SUSPENSION AND BRAKES

Brakes (Front/Rear)	296 mm disk with 2 piston calipers / 240 mm disk with 1 piston calipers
Tyres (Front/Rear)	130/90 R16M/C 67H / 150/80 R16M/C 71H
Suspension Front	41 mm Telescopic forks (adjustable)
Suspension Rear	Showa with Pro-Link® system (adjustable)



Graphite Black

Matt Axis Gray Metallic



Matt Jeans Blue Metallic



Rebel-S  
Matt Axis Gray Metallic

# MSX125

Engine Type	2-valve air-cooled single cylinder
Engine Displacement	124.9 cc
Max. Power Output	9.7 bhp @ 7,000 rpm
Max. Torque	10.9 Nm @ 5,500 rpm
Fuel Consumption/Emissions	41.4 miles/litre / 34 g/km

Length × Width × Height (mm)	1,760 × 755 × 1,010
Seat Height (mm)	765
Wheelbase (mm)	1,200
Kerb Weight (kg)	101.7

Single 220 mm disc with hydraulic dual-piston brake caliper / Single 190 mm disc with hydraulic single-piston brake caliper

Tyres (Front/Rear)	120/70 R12 / 130/70 R12
Suspension Front	USD Front Forks, 31 mm

Mono shock, steel square pipe swingarm



Matt Axis Gray Metallic

Pearl Valentine Red

# SUPER CUB

Engine Type	Air-cooled SOHC 4-stroke 2-valve
Engine Displacement	125 cc
Max. Power Output	9.5 bhp @ 7,500 rpm
Max. Torque	10.4 Nm @ 5,000 rpm
Fuel Consumption/Emissions	41.4 miles/litre / 34 g/km

Length × Width × Height (mm)	1,915 × 720 × 1,000
Seat Height (mm)	780
Wheelbase (mm)	1,245
Kerb Weight (kg)	109

Single 220 mm hydraulic disc with ABS / 130mm drum

Tyres (Front/Rear)	70/90 R17M/C 38P / 80/90 R17M/C 50P
Suspension Front	Telescopic

Twin shock



Pearl Niltava Blue

Pearl Nebula Red

# MONKEY

Engine Type	Air-cooled SOHC 4-stroke 2-valve
Engine Displacement	125 cc
Max. Power Output	9.3 bhp @ 7,000 rpm
Max. Torque	11 Nm @ 5,250 rpm
Fuel Consumption/Emissions	41.4 miles/litre / 34 g/km

Length × Width × Height (mm)	1,710 × 755 × 1,030
Seat Height (mm)	776
Wheelbase (mm)	1,155
Kerb Weight (kg)	107

Single 220 mm hydraulic disc with IMU-based ABS / Single 190 mm hydraulic disc

Tyres (Front/Rear)	120/80 R12 65J / 130/80 R12 69J
Suspension Front	USD fork, 100 mm axle travel

Twin shock, 104 mm axle travel



Banana Yellow

Pearl Nebula Red



Pearl Shining Black



**SPECIFICATIONS**

# CB1000R

## ENGINE

Engine Type	Liquid-cooled DOHC In-line 4 cylinder
Engine Displacement	998 cc
Max. Power Output	143.5 bhp @ 10,500 rpm
Max. Torque	104 Nm @ 8,250 rpm
Fuel Consumption/Emissions	10.4 miles/litre / 140 g/km

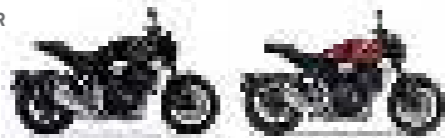
## CHASSIS, DIMENSIONS AND WEIGHT

Length x Width x Height (mm)	2,120 x 789 x 1,090
Seat Height (mm)	830
Wheelbase (mm)	1,455
Kerb Weight (kg)	212

## WHEELS, SUSPENSION AND BRAKES

Brakes (Front/Rear)	310 mm double disc / 256 mm single disc
Tyres (Front/Rear)	120/70 ZR17 / 190/55 ZR17
Suspension Front	Showa SFF-BP USD fork, 120 mm stroke
Suspension Rear	Monoshock with gas-charged HMAS damper featuring 10-step pre-load and stepless rebound damping adjustment, 131 mm stroke

CB1000R



Graphite Black      Candy Chromosphere Red



Matt Pearl Glare White

CB1000R+



Graphite Black      Matt Pearl Glare White

# CB650R

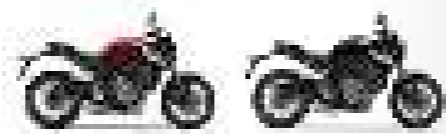
In Line 4 Cylinder, Liquid-cooled 4-stroke, 16-valve DOHC
649 cc
93.9 bhp @ 12,000 rpm (35 kW @ 10,500 rpm)
64 Nm @ 8,500 rpm (49 Nm @ 4,500 rpm)
12.7 miles/litre / 112 g/km

2,130 x 780 x 1,075
810
1,450
202

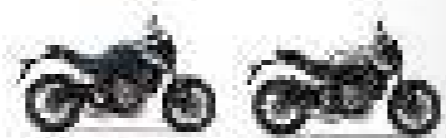
2ch ABS, 310 mm x 4.5 mm disc with four piston caliper / 240 mm x 5 mm disc with single piston caliper
120/70 ZR17 M/C / 180/55 ZR17 M/C

Up side down Telescopic, 41 mm

Mono with 10 stage Preload adjuster, Aluminium Cast swingarm



Candy Chromosphere Red      Graphite Black



Matt Jeans Blue Metallic      Matt Crypton Silver Metallic

# CB300R

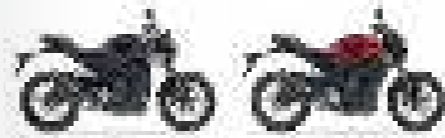
Liquid-cooled single cylinder
286 cc
30.6 bhp @ 8,500 rpm
27.5 Nm @ 6,500 rpm
20 miles/litre / 72 g/km

2,012 x 802 x 1,052
799
1,352
143

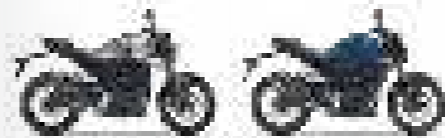
296 mm hubless floating disc / 220 mm disc with single piston caliper
110/70 R17 M/C 54H / 150/60 R17 M/C 66H

37 mm Telescopic fork, 130 mm stroke

Monoshock damper, Pro-Link® swingarm, 107 mm travel



Black      Candy Chromosphere Red



Matt Crypton Silver Metallic      Matt Pearl Agile Blue

# CB125R

Liquid-cooled 4-stroke 2-valve SOHC single cylinder
125 cc
13.1 bhp @ 10,000 rpm
10 Nm @ 8,000 rpm
31 miles/litre (WMTC Mode)

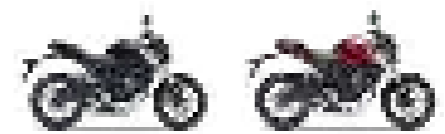
2,015 x 820 x 1,055
816
1,345
126

Front & rear independent ABS with IMU

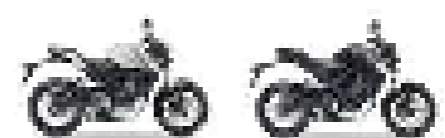
110/70 R17 M/C 54H / 150/60 R17 M/C 66H

41 mm Telescopic inverted

Single-damper



Black      Candy Chromosphere Red



Pearl Metalloid White      Matt Axis Grey Metallic



**SPECIFICATIONS**

# GOLD WING

**ENGINE**

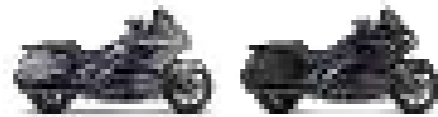
Engine Type	Liquid-cooled 4-stroke 24 valve SOHC flat-6
Engine Displacement	1,833 cc
Max. Power Output	124.7 bhp @ 5,500 rpm
Max. Torque	170 Nm @ 4,500 rpm
Fuel Consumption/Emissions	11.1 miles/litre / 128 g/km

**CHASSIS, DIMENSIONS AND WEIGHT**

Length x Width x Height (mm)	2,475 x 925 x 1,340
Seat Height (mm)	745
Wheelbase (mm)	1,695
Kerb Weight (kg)	365 (DCT 364)

**WHEELS, SUSPENSION AND BRAKES**

Brakes (Front/Rear)	320 mm x 4.5 mm dual hydraulic disc with 6-piston calliper, floating rotors and sintered metal pads / 316 mm x 11 mm ventilated disc with 3-piston calliper and sintered metal pads
Tyres (Front/Rear)	130/70 R18 / 200/55 R16
Suspension Front	Double Wishbone
Suspension Rear	Pro-Link®



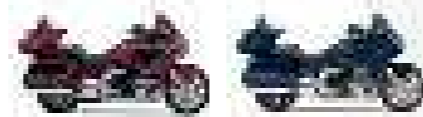
Matt Majestic Silver Metallic Matt Ballistic Black Metallic

# GOLD WING TOUR

Engine Type	Liquid-cooled 4-stroke 24 valve SOHC flat-6
Engine Displacement	1,833 cc
Max. Power Output	124.7 bhp @ 5,500 rpm
Max. Torque	170 Nm @ 4,500 rpm
Fuel Consumption/Emissions	11.1 miles/litre / 128 g/km (DCT 131 g/km)

Length x Width x Height (mm)	2,575 x 925 x 1,430
Seat Height (mm)	745
Wheelbase (mm)	1,695
Kerb Weight (kg)	380 (DCT 384)

Brakes (Front/Rear)	320 mm x 4.5 mm dual hydraulic disc with 6-piston calliper, floating rotors and sintered metal pads / 316 mm x 11 mm ventilated disc with 3-piston calliper and sintered metal pads
Tyres (Front/Rear)	130/70 R18 / 200/55 R16
Suspension Front	Double Wishbone
Suspension Rear	Pro-Link®



Candy Ardent Red/Black Pearl Hawkseye Blue



Candy Ardent Red Darkness Black Metallic

# VFR800F

Engine Type	Liquid-cooled 4-stroke 16-valve DOHC 90° V-4
Engine Displacement	782 cc
Max. Power Output	104.5 bhp @ 10,250 rpm
Max. Torque	75.1 Nm @ 8,500 rpm
Fuel Consumption/Emissions	12 miles/litre / 121 g/km

Length x Width x Height (mm)	2,134 x 748 x 1,203
Seat Height (mm)	789 / 809 (STD position / High position)
Wheelbase (mm)	1,460
Kerb Weight (kg)	242

Brakes (Front/Rear)	310 mm x 4.5 mm dual floating hydraulic disc / 256 mm x 6 mm hydraulic disc
Tyres (Front/Rear)	120/70 ZR17M/C (58W) / 180/55 ZR17M/C (73W)
Suspension Front	43 mm HMAS cartridge-type telescopic fork with stepless preload and ten DF adjustment, 108 mm axle travel
Suspension Rear	Pro-Link® with gas-charged HMAS damper, 7-step (stepless remote-controlled hydraulic) preload and stepless rebound damping adjustment, 120 mm axle travel



Digital Silver Metallic Victory Red



# HONDA TECHNOLOGY



## AIR BAG

A tank-mounted air bag – unique in motorcycling – is designed to deliver an extra level of safety, and peace of mind to the rider.



## ANTI-LOCK BRAKING SYSTEM

Reduces braking pressure by monitoring the wheel speed, preventing the wheels from locking up.



## COMBINED BRAKE SYSTEM

Actuates both front and rear brakes when the rear brake pedal (or lever) is engaged, for a smooth and confident balance of braking control.



## DUAL CLUTCH TRANSMISSION

Combines the riding enjoyment of a manual transmission with the convenience of an automatic, delivering enhanced comfort and sporty performance.



## EURO 4

Complies with EURO 4 emissions regulations.



## EURO 5

Complies with EURO 5 emissions regulations.



## HONDA EVOLUTIONAL CATALYSING SYSTEM

Oxygen-sensing system maintains an optimal air/fuel mixture for the most effective catalytic reduction of exhaust emissions.



## HONDA IGNITION SECURITY SYSTEM

Only allows the bike to be started by its original encoded keys to effectively protect against theft.



## HONDA MULTI-ACTION SYSTEM

Cartridge-type front fork and rear damper design ensures a confident balance of compliant damping and precise handling.



## HONDA SELECTABLE TORQUE CONTROL

If the Honda Selectable Torque Control (HSTC) system senses an imminent loss of rear wheel traction it reduces torque to allow the tyre to grip. Multiple levels are selectable according to riding mode or user preference.



## HONDA SELECTABLE TORQUE CONTROL

If the Honda Selectable Torque Control (HSTC) system senses an imminent loss of rear wheel traction it reduces torque to allow the tyre to grip.



## HILL START ASSIST

After stopping on an incline an extra squeeze of brake maintains hydraulic pressure to the rear caliper – when it's time to move simply open the throttle.

Honda has developed and applied many innovative technologies for its motorcycle range, designed to have the greatest possible benefit for you and the world around you.



## LED LIGHTS

Brighter and more energy efficient than traditional bulbs, with no time delay and a longer life.



## PROGRAMMED FUEL INJECTION

Map-type computerised system maintains strong power and responsive performance in all conditions.



## SHOWA DUAL BENDING VALVE

Showa Dual Bending Valve forks improve ride comfort and handling by delivering proportional rebound damping with firmer compression damping.



## SHOWA USD FORK

Larger diameter tubes above and smaller tubes at the bottom increase surface area providing more rigidity to deal with off road terrain.



## HILL START ASSIST

After stopping on an incline an extra squeeze of brake maintains hydraulic pressure to the rear caliper – when it's time to move simply open the throttle.



## REVERSE GEAR

Getting the Gold Wing into – or out of – wherever you want it is made effortless by the addition of an easy-to-use reverse gear.



## SMART KEY

This innovative technology improves both convenience and security. As long as your key is in your pocket or bag, you can release the seat and start the engine with the press of a button.



## TWS RIDING MODE SELECT SYSTEM

Giving a choice of 3 riding modes; Mode 1 delivers standard ECU maps, Mode 2 provides smoother throttle control and Mode 3 returns a more aggressive power delivery.



## RADIAL MOUNT CALIPERS

Offers better alignment to the disc and rigidity. Radial-mount calipers are secured and supported at both ends providing less caliper flex and better braking performance



## USB CHARGING

We've subtly integrated a USB socket into the under-seat storage compartment. No need for an adaptor; simply connect your device's lead, plug it in, and go.



## 17 INCH WHEEL

Large diameter front wheel give extra stability over rough or cobbled city streets and therefore confident, reassuring handling.

# HONDA DCT DUAL CLUTCH TRANSMISSION



DCT is an automated clutch and shift operation system that retains the direct acceleration feel of a manual transmission with the ease of use of an automatic. DCT allows the rider to focus on accelerating, turning and braking, rather than gear shifting. This increases confidence and control for the rider. DCT technology takes the joy of riding and controlling your machine to the next level.



## FREEDOM

Ride without concerning yourself with the clutch lever and shift pedal, for smooth and seamless gear changes.

### 2 AUTOMATIC MODES

S -Sport- For a more sporty driving style.  
D -Drive- For relaxed city and highway driving.

### 1 MANUAL SELECT MODE

MT, with change of gear via left hand.

### NEW G SWITCH\*

Improves rear wheel traction when off-road.

\*Only for Africa Twin & X-ADV.

## CONTROL

Switch between auto and manual mode to suit any riding environment. Eliminate shift shocks like an expert biker.

### DCT RANGE



VFR1200X



NC750X



AFRICA TWIN  
ADVENTURE  
SPORTS



AFRICA TWIN



INTEGRA



X-ADV



GL1800 GOLD WING  
(3RD GEN, 7 SPEED DCT)

# ADRENALINE TEST RIDE

Leave behind the daily grind and experience more from your riding.

Our range of Riding Centres offer expert tuition from experienced Honda instructors on Super Sport, Adventure, Trials and Off Road bikes as well as the chance to test ride bikes from across the Honda range.

For more info go to:

[honda.co.uk/motorcycles/ride-with-us](http://honda.co.uk/motorcycles/ride-with-us)



# DREAMS REALLY DO COME TRUE

Soichiro Honda said,

**'We only have one future, and it will be made of our dreams, if we have the courage to challenge convention.'**

Honda's philosophy in dreaming of a better world for people catalysed the invention of the ASIMO, HondaJet, NSX and the legendary Africa Twin. Dreams can be powerful, they push you to achieve more, to explore new ideas, new technologies and uncover new ways of solving problems. It takes independent thinking and audacity to pursue dreams. It also takes passion and innovation to never allow the dream to die and to shape them into a reality for the modern-day world.





The specific details of this brochure do not apply to any particular product supplied or offered for sale. Manufacturers reserve the right to vary specifications, including colours, with or without notice at such times in such manner as deemed appropriate. Major as well as minor changes may be involved. Every effort, however, is made to ensure the accuracy of the particulars contained in this brochure. Consult your Dealer for details regarding the specifications of any featured product. This publication shall not constitute - under any circumstances whatsoever - an offer by the Company to any individual. All sales are made by the Distributor or Dealer subject to and with the benefit of the standard Conditions of Sale and Warranty provided by the Distributor or Dealer, copies of which may be obtained upon request. While efforts are made to ensure specification accuracy, brochures are prepared and printed several months in advance of distribution and consequently cannot always immediately reflect either changes in specification or in some isolated cases the provision of a particular feature. Customers are always advised to discuss specific details with the supplying Dealer, especially if a selection is dependent upon one of the features advertised. Please contact your local dealer for information and specifications. Please note that the fuel consumption figures provided are results obtained by Honda under standardised testing conditions prescribed by WMTC. Tests are conducted on a rolling road using a standard version of the vehicle with only one rider and no additional optional equipment. Actual fuel consumption may vary depending on how you ride, how you maintain your vehicle, weather, road conditions, tyre pressure, installation of accessories, cargo, rider and passenger weight, and other factors. You accept that if you do go ahead and make a purchase or enter into any kind of transaction, whether for payment or not, you did so entirely in reliance on your own skill and judgement and not on that of anyone else.

RIDE WITH STYLE Read the owner's manual thoroughly. Get to know your machine and its capabilities. Concentration assists anticipation. Observe other road users' movements. Brake in plenty of time. Always wear a helmet and quality kit, ride fit and NEVER after drinking alcohol. Good roadcraft and courtesy identify the skilled and stylish rider. Honda endorse the law that all helmet visors must comply with BS 4110. Visors that transmit less than 50% of visible light cannot legally be used on the road.

**Honda Motor Europe - Motorcycles**  
Cain Road, Bracknell, Berkshire, RG12 1HL England  
[honda.co.uk](http://honda.co.uk)



This brochure is printed on Forestry Stewardship Council certified paper which has been produced at a mill and printed by a printer that has been certified to the ISO 14001 environmental standard using vegetable oil based inks and aqueous based coatings. It can be disposed of by recycling, incineration for recovery or is biodegradable.



Please don't bin me.  
Pass me on to a  
friend or recycle me.



BLUE SKIES FOR  
OUR CHILDREN